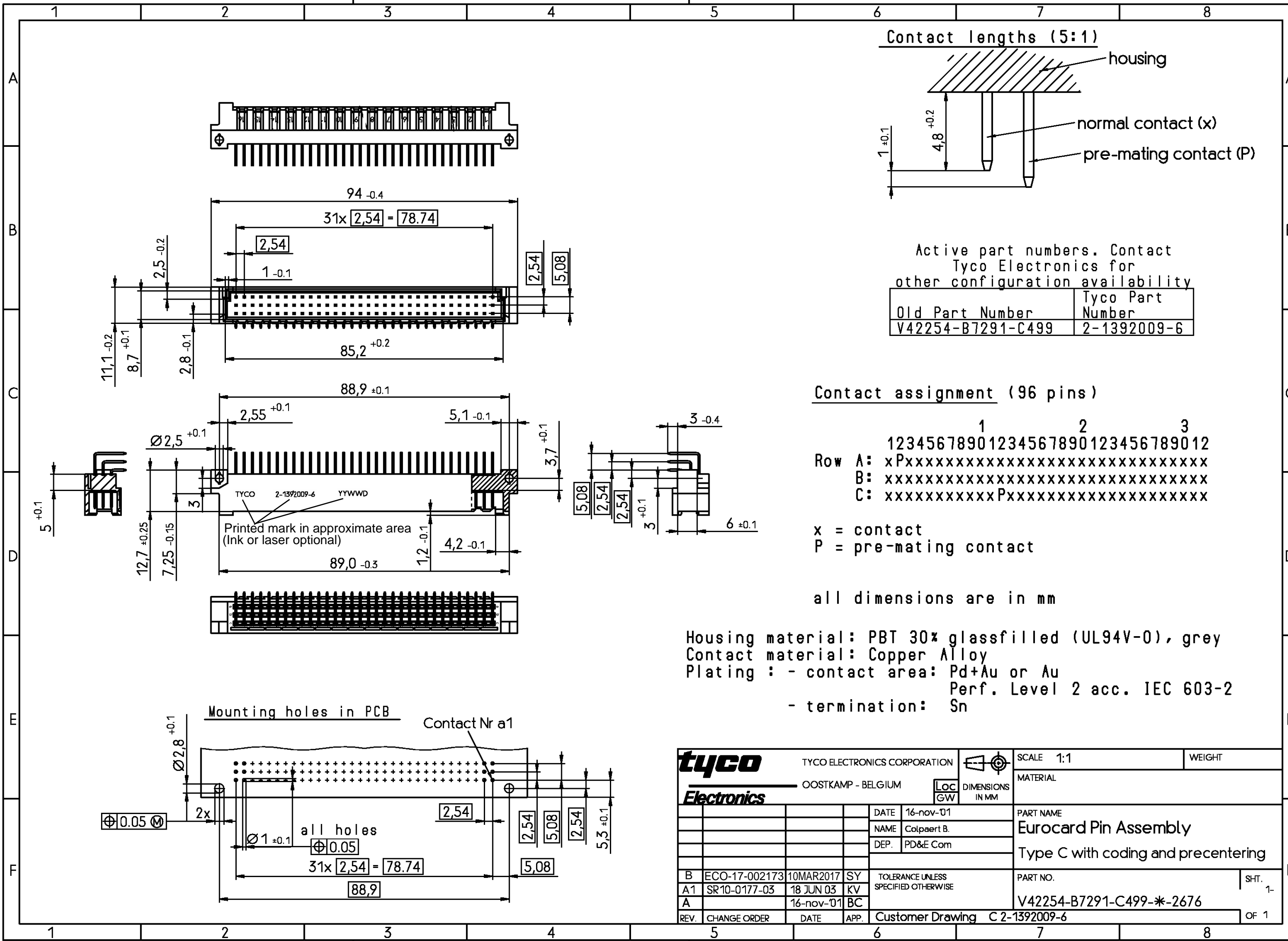


THIS INFORMATION IS CONFIDENTIAL AND PROPRIETARY TO TYCO ELECTRONICS CORPORATION AND ITS WORLDWIDE SUBSIDIARIES AND AFFILIATES. IT MAY NOT BE DISCLOSED TO ANYONE, OTHER THAN TYCO ELECTRONICS PERSONNEL, WITHOUT WRITTEN AUTHORIZATION FROM TYCO ELECTRONICS CORPORATION, HARRISBURG PENNSYLVANIA USA

PROPRIETARY:



tyco TYCO ELECTRONICS CORPORATION		SCALE 1:1		WEIGHT	
OOSTKAMP - BELGIUM		DIMENSIONS IN MM		MATERIAL	
DATE 16-nov-01		PART NAME			
NAME Colpaert B.		Eurocard Pin Assembly			
DEP. PD&E Com		Type C with coding and precentering			
B	ECO-17-002173	10MAR2017	SY	PART NO.	
A1	SR10-0177-03	18 JUN 03	KV	SHT. 1-	
A		16-nov-01	BC	V42254-B7291-C499-* -2676	
REV.	CHANGE ORDER	DATE	APP.	Customer Drawing C 2-1392009-6	
				OF 1	